



Villages sheet

Village name	MASSA MARITTIMA
Province	GROSSETO
Tourist information	IAT Tourist Office Piazza Garibaldi n. 2 c/o Palazzo Podestà Phone +39 0566 906554 Email: ufficioturismo@comune.masamarittima.gr.it Website: https://www.turismomassamarittima.it/

TESTED BY: [Handy Superabile Social Promotion Association](#) in summer 2024

Please note The following information refers to the date of verification shown at the bottom of each sheet. **The Association** is not responsible for any significant changes made by the property after the visit.

Summary

Villages	1
Description	2
Arrival at the village.....	3
Private/public parking.....	3
Pathway from the car park to the entrance of the route	5
Itinerary description.....	6
Any accessible bars/restaurants	13
Toilets equipped for people with reduced mobility	14
Medical practices/healthcare facilities.....	16



Description

The city of Massa Marittima, already known in Etruscan times, was a lively center in medieval times when the bishopric of Populonia, exposed to barbarian raids, was transferred to the village. The episcopal power was decisive for the subsequent development of the town. In 1225 it became a prosperous and free municipality, experiencing a period of economic and demographic prosperity due to the exploitation of the mines, despite the fact that it was repeatedly the object of the expansionist aims of Pisa, which dominated in several phases during the twelfth and thirteenth centuries, and of the Sienese Republic, which definitively conquered it in 1337.

The city has a particular urban layout with two clearly distinct faces: the Old Town and the New Town.

The heart of the old city is the square with its most important buildings (Cathedral, Palazzo Podestà, Bishop's Palace, Town Hall and Loggia.

the Upper Town is characterized by the presence of important religious and defensive buildings such as the Church of San Agostino, San Pietro all'Orto, the convent of San Francesc with the church of the same name, the Museum of Sacred Art, the Keep and the Candlestick Tower. The itinerary can start either from the Old Town or from the New Town.

How to reach Massa Marittima

By car

From the North along the coast
E80 to Follonica est, continue on SR439 for 14km following the signs for Massa Marittima.

From inland areas
Siena-Massa Marittima by car: SP73bis and continue on SP441. Volterra-Massa Marittima by car: SR68 and continue on SR439.

From the South Rome/Grosseto
E80 to Gavorrano Scalo, continue for 18 km following the signs for Massa



	Marittima.
By plane	Pisa Airport
Assistance service for people with disabilities	YES
Embarkation/disembarkation of passengers with reduced mobility	with courtesy chair and ambulift/finger
Tactile paths for the blind and visually impaired	YES
Present a local Accessible toilet with grab handles	YES
By train	Follonica railway station It is the nearest station and is located about 20km from Massa Marittima.
Assistance service for people with disabilities	YES in the stations of Cecina 15 km, San Vincenzo 21 km and Campiglia Marittima 29 km
Blue Hall Reference	Location Florence
Carriage access	with forklift/ramp
There is a toilet room in the station accessible with grab handles	YES
By bus	From Siena, Follonica and Grosseto See the www.at-bus.it/it website

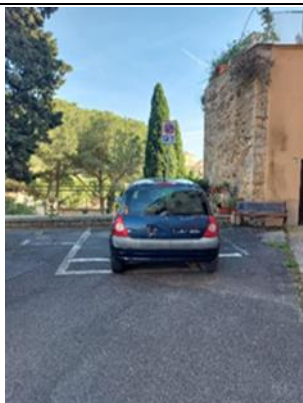
Arrival at the village

Private/public parking

Public parking nearby Old Town	YES
Type of public parking floor	Asphalt
Presence of parking space reserved for people with disabilities	YES n. 5 Stalls



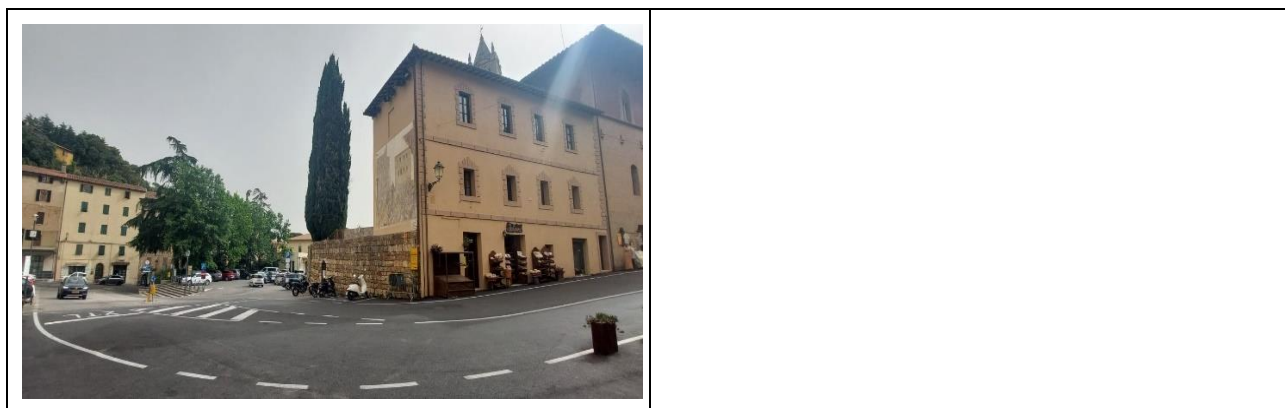
<p>Public parking nearby New Town</p>	<p>YES</p>
<p>Type of public parking floor</p>	<p>Asphalt</p>
<p>Presence of parking space reserved for people with disabilities</p>	<p>SI n.6, of which n.2 at the Mining Museum, n. 1 at the San Pietro all'Orto Complex, n. 2 at the Sant'Agostino church, n.1 at the Candeliere Tower</p>
	<p>n. 2 places at the Mining Museum</p>
<p>n.1 located in the street on the right of Corso Diaz, near the museum of sacred art n. 2 places at the Church of Sant'Agostino</p>	



n. 1 position at Torre del Candeliere

Pathway from the car park to the entrance of the route

Route from the old town car park to the starting point	Flat
Distance from parking to entrance	About 5 meters
Type of trail surface	asphalt
There are indicators and tactile maps	NO



Itinerary description

Length	About 350 meters
Along the itinerary there are maps and tactile signs for the blind	NO
Along the route there are information panels with QR CODE	YES
Description of the itinerary indicating if there are sections with a significant slope or the presence of steps	From the parking lots about 2 meters away we find on the right the Fonti dell'Abbondanza, a singular fresco work dating back to the second half of the thirteenth century. Visitors with reduced mobility can admire the sources of abundance up close along a small flat road located next to the parking lots. The pavement of the road is made of slightly uneven stone blocks in the first section. However, vision is also guaranteed from the road.



From the Fonti along Via Ximenes on asphalt pavement and with a slope of 6% you arrive on Piazza Garibaldi where there are the main religious and civil buildings.



The Cathedral dedicated to San Cerbone and dating back to the 12th century is an example of Romanesque Gothic architecture and inside it has numerous works of art. The cathedral is accessed via 16 steps that cannot be overcome with any precaution. There are two entrances, the main one and the side one, both with steps.



Inside, the naves are free of obstacles, but the altar has three steps. Behind the altar is the Ark of San Cerbone carved from panels with episodes from the life of the saint, a masterpiece signed by Goro di Gregorio



The Chapel where the Majesty by Duccio di Boninsegna is located has three + two steps.





The Palazzo Podestà, dating back to the first half of the thirteenth century decorated with numerous coats of arms of the Podestà that have followed one another over the centuries, today houses the archaeological museum has 6 access steps and 1 step to the main door. The Town Hall has 2 steps to the main entrance.

The pavement of the square is made of stone blocks but is free of obstacles.





From Piazza Garibaldi you continue along Corso della Libertà on paving blocks of stone until you reach the Porta di San Rocco, an integral part of the oldest circuit of the thirteenth-century walls prior to the formation of the New City.

The itinerary continues in Città Nuova which can be reached by car.

Once in Corso Diaz we can leave the car permanently and continue on foot. On the left side of the course, we find the Complex of San Pietro all'Orto (sacred art museum) reachable on the flat, through a gate with a large opening and a 4 cm high step threshold. The museum exhibits works of great value dating back to the city's most flourishing artistic period.



Continue to the church of Sant'Agostino along Corso Diaz. The route is flat on asphalt pavement.



The church of Sant'Agostino was built in 1299 with the intention of replacing the pre-existing Church of San Pietro all'Orto, which could no longer contain the expanding population of Masseto. How to access the site via 2 steps, the first of 19 cm, the second of 18 cm.

Cloister entrance via 2 steps, the first of 19 cm, the second of 14 cm.



After visiting the church and cloister, continue along Corso Diaz until you reach the Candlestick Tower.



The Tower was erected in 1228, had a control function and wanted to symbolize the authority of the Municipality of Massa Marittima which had emancipated itself a few years ago from the dominion of the Bishop-prince. The tower was originally a third higher than the current one, which is the result of the reconstruction by Siena at the end of the war that brought it victorious over Massa.

Another Sienese initiative was the construction of the majestic arch connecting with the Cassero, built in the center of the city in order to keep under control the still rebellious people of Massa Marittima ready to rise.

The Tower is accessed through 2 ramps, the first 30 meters long with a slope of 4.7%, the second 30 meters long with a slope of 5.7%



Up and up we find an elevator that allows us to climb the walls and admire the view.

Lift: Door width 80 cm, cabin width 110 cm, cabin depth 140 cm, call button height 90 cm, highest button height keypad 103, embossed/braille keys .



From the walls, continuing along Via San Francesco, we head towards the Convent of San Francesco.

It is advisable to continue the itinerary by car, as the route from the Tower to the site has a very steep route in a long stretch.



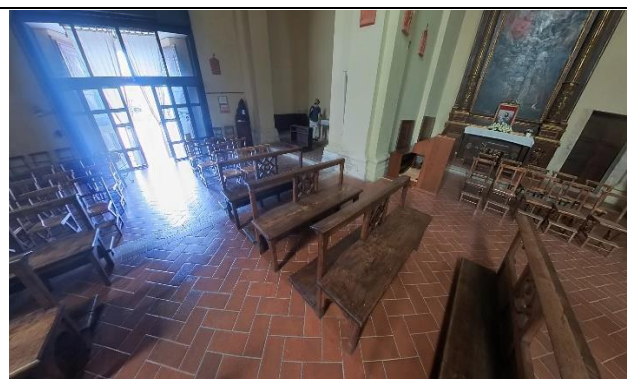


Once we enter the convent on our right we find the church of San Francesco. Founded in the thirteenth century by the saint of the same name who was in Massa Marittima at that time, it preserves the tomb of Bindoccio, son of Margherita Aldobrandeschi and Nello Pannocchieschi (married in his first marriage to Pia dei Tolomei).



Church entrance presence of 11 cm high step. Beyond the first door we find another sliding door with a flat entrance.



Both doors are more than 90 cm wide.



Any accessible bars/restaurants

Type of room and name	Bar Restaurant il Gotto
Location	Piazza Matteotti
How to access the premises	At the entrance it has 2 steps. the first of 6 cm (on the left side downhill) the second of 16 cm.

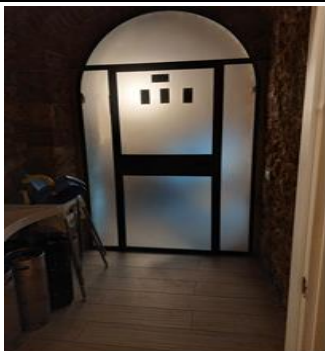


	
Useful width of door/entrance gate	Superior to 90 cm
Type of door	2-leaf
Types of tables	4 legs
Braille menu	NO
Table service for people with disabilities	YES



Toilets equipped for people with reduced mobility

There is an accessible toilet	YES
Location of the toilet room	At Bar Ristorante il Gotto
How to access the premises	Flat
Usable width of the entrance door	90 cm
Type of door	with inward opening door
Toilet height	45 cm
Toilet seat with open front tooth	YES
Support handles	to the right of the toilet
Flexible shower on the side of the toilet	NO
Free space on the sides of the toilet	Right 50 cm On the left over 90 cm Front over 90 cm





Electric doorbell/telephone on the side of the toilet	YES
Washbasin with space underneath for wheelchair approach	Above 70 cm
Height from the ground lower edge mirror	Not enough for people with reduced mobility
Baby changing table	NO

Medical practices/healthcare facilities

Hospitals near the property	<p>S. Andrea Massa Marittima Hospital Via Risorgimento 43 telephone +39 0566 909111</p> <p>Emergency room massa Marittima at Hospital Phone +39 909232</p> <p>Misericordia Grosseto Hospital Via Senese 161, phone +39 0564485111</p>
Other healthcare facilities	<p>Information point, toll-free number 8006133, open Monday to Friday from 8.00 a.m. to 6.00 p.m., Saturday and Sunday from 9.00 a.m. to 1.00 p.m.</p> <p>Nephrology and Dialysis Unit c/o Grosseto Hospital telephone +39 0564 485159 email alberto.papi@uslsudest.toscana.it</p>

TESTED BY: [Handy Superabile Social Promotion Association](#) in 2024

